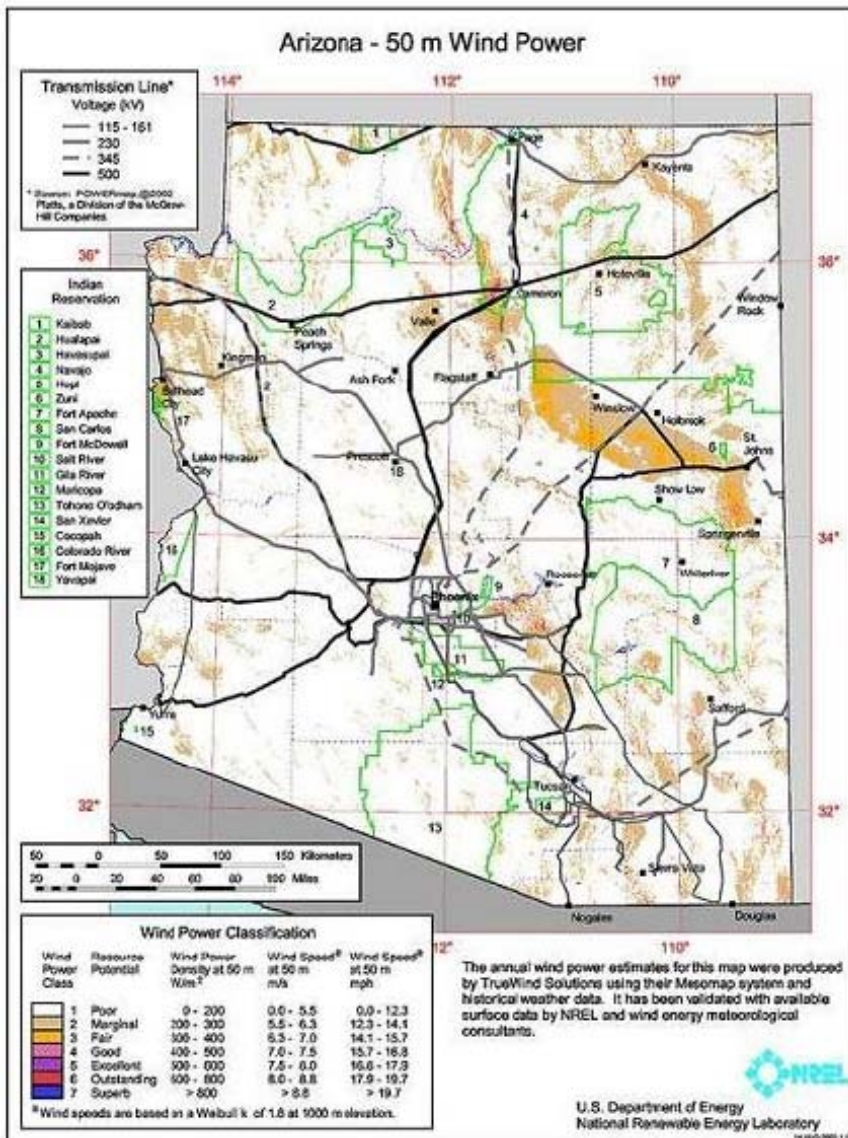


Wind

Until recently, Arizona has not been known to possess commercial-grade wind energy resources. Arizona has long used wind power to pump water on ranches and rural Arizonans have also been able to rely on small-scale wind generation to supplement their electricity needs.

However, a 2003 wind energy survey conducted by the National Renewable Energy Laboratory identified several areas in the state as having commercial-grade wind resources. As a result, installed wind energy generating capacity in Arizona will approach 15 MW by the end of 2006, with construction beginning in October on the state's first wind farm. The 15 MW wind energy generating facility, located near Kingman, is scheduled to begin producing energy by year's end. The Kingman wind farm will be located just south of the city on 808 acres at the Nucor Steel plant.



The total installed wind energy capacity is expected to continue to grow with additional wind farms being built in areas identified by NREL as having commercial-grade wind resources (Navajo, Coconino and Mohave County). Another wind farm on the drawing board is a 60 MW project in the planning stages for an area east of Flagstaff as well as a discussed 400 MW wind farm near Hoover Dam. Considering the chronic water shortages facing the Colorado River system and the associated decline in power generation, the 400 MW Hoover Dam area project offers a valuable and much needed energy resource supplement to the region's renewable energy needs. There are five transmission lines that pass through this area that will allow the energy to be marketed to the Arizona, Nevada and California markets.

All projects either planned or being discussed are lead by private companies with contracts to sell electricity to utilities. Private companies have submitted applications with the state Land Department to lease 5,000 more acres of land near the St. Johns site in addition to 30,000 acres that make up the Hoover Dam area project.

The map to the left, produced by the NREL, shows 2003 wind data.

Wind Energy Baseline

Resource	2004	2005	2006	Total
Wind	0 MW	0 MW	15* MW	15 MW

* Planned

Links and Resources

www.wind.nau.edu



ARIZONA DEPARTMENT OF COMMERCE
Our Job is JOBS!